



Roberto Panetta



Tension Software



CryptoEdit 2.6

User Guide

We Make Software - ecleti.com - tensionsoftware.com

CryptoEdit © 2005-2023 Ecleti - Roberto Panetta all rights reserved

Every effort has been made to ensure that the information in this manual is accurate.

Ecleti is not responsible for printing or clerical errors.

Other company and product names mentioned herein are trademarks of their respective companies.

Welcome to Crypto Edit

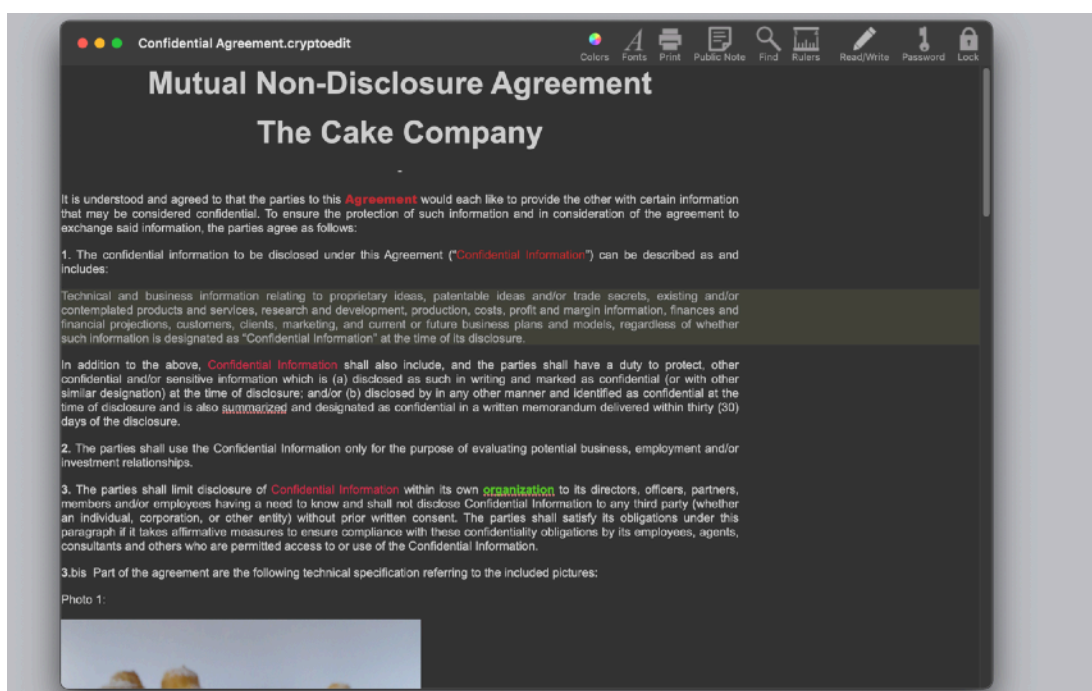
Encrypted RTF Documents with Images

CryptoEdit is a program to create and edit protected encrypted documents.

It can manage TEXT, RTF and RTFD (with images) format.

It saves documents on disk always as encrypted and is the ideal solution to manage reserved documents with formatted text and images.

CryptoEdit is absolutely simple, powerful and secure.



CryptoEdit allows to edit document as a normal simple word processor which can handle text and images. All the feature available in a modern Cocoa based rich text processor are available in CryptoEdit.

The text can be formatted using rules, different font, style, size and colour.

All the usual manipulations of fonts are available via menu and dialogs plus custom styles are available. Spelling in your native language. Text search is full implemented.

Insertion of images inside the document with just drag and drop.

CryptoEdit can import from other documents in standard TEXT or RTF or RTFD (RTF + images) .

Documents can also be exported as TEXT, RTF or standard RTFD (included images)

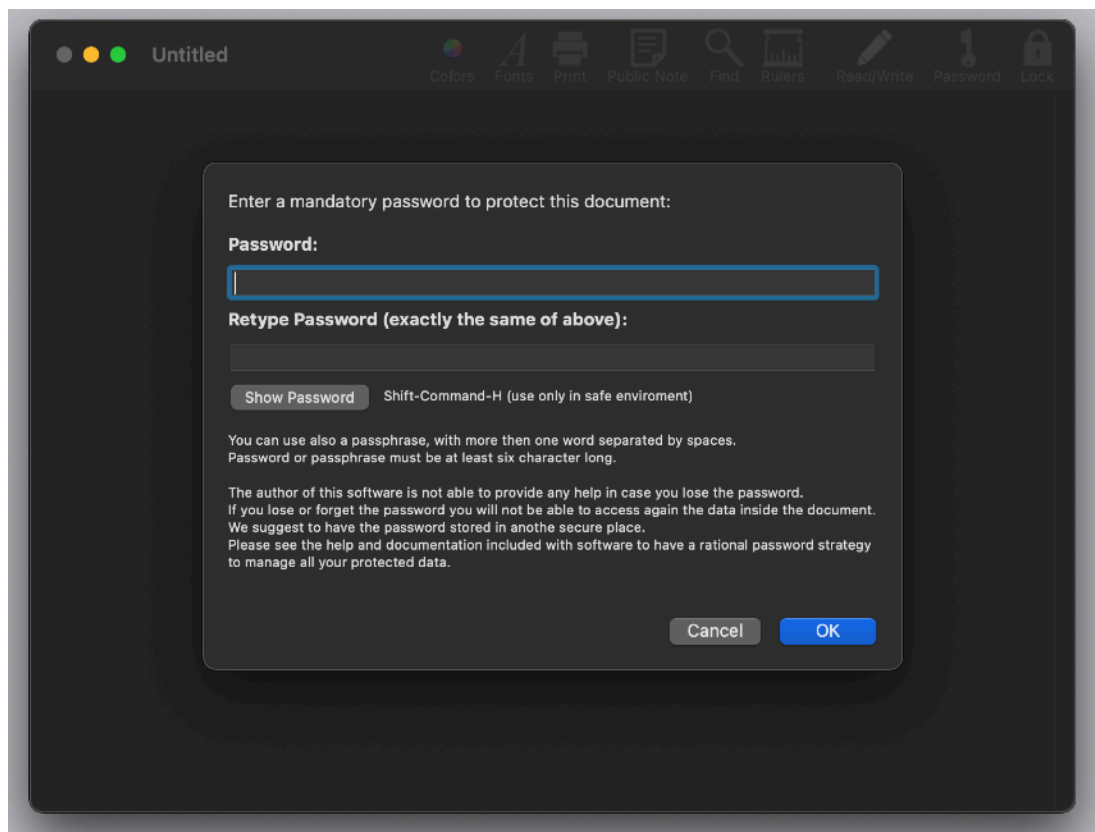
CryptoEdit document are saved always encrypted for security purpose. If you saved it you can be sure that you saved it encrypted.

Saving a document containing images, will create on disk a single file with all the text and images encrypted in a single file. Any data the user puts in the document is encrypted and not readable without the right password.

Getting Started with CryptoEdit

Start to Work with CryptoEdit

At launch CryptoEdit opens automatically e “Untitled” empty window.
It will ask for a password to protect the document.
Any CryptoEdit document is always encrypted and protected.



Insert the password you want to use to protect the document then start edit it.

You can use CryptoEdit exactly as a normal styled editor.
All the function available in an advanced editor are available under CryptoEdit.
You can even drag and drop images from the finder inside a document and them will be embedded inside
You can create complex document with images and formatted text inside using different font, size and colors.

Document will be saved on disk as usually but always encrypted and protected.
The protection of the document it is Not based on a trick.
The protection it is not based on the application refusing to open the document if you don't insert the password.
The protection is based on the encryption, using the new AES-256 algorithm, of the entire content of the document.

When you open a document, if you don't provide the right password, the entire content of the file is an unrecognizable bunch of bits and no one, even expert hackers or programmers, can understand them.

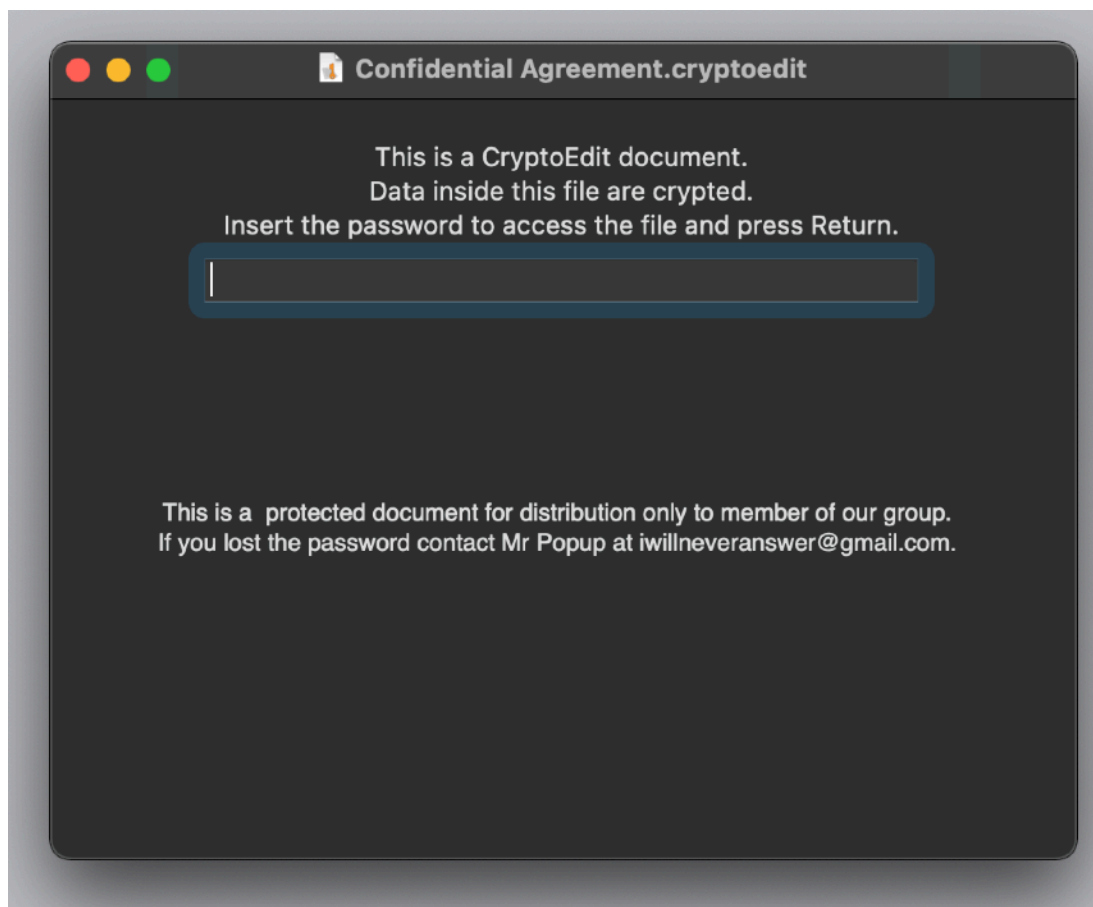
There is also an important thing: if you lose the password of a document, it can't be opened.

Even we, the developer of CryptoEdit can't help you.

There are no backdoors or other tricks. CryptoEdit is a security tool and we realized it as the best tool we could produce with honesty and integrity. We ensure the users that there is no way to break it except breaking the AES-256 encryption of the data inside the document.

We will repeat it again: there are no backdoors of any sort in Crypto Edit.

To decrypt the file content, you must have the password used to protect it.



To avoid to forget the passwords used to protect your documents, we suggest to save the passwords used inside Password Repository, a software we produce useful to manage all your passwords of any kind.

CryptoEdit Reference

About CryptoEdit

CryptoEdit is an advanced TEXT, RTF and RTFD (with Images) Editor based on Cocoa, able also to embed images in text, that saves documents on disk always in a encrypted (password protected) way

The user has no way to save the document in plain format, this to avoid to save reserved data in a form anyone can read by mistake. If it was saved with CryptoEdit is secure by default.

Only a person knowing the password used to save a CryptoEdit document, will be able to open and read it.

CryptoEdit is easy to use because it is similar to other word processor available on the Mac plus adding default encryption on anything saved on disk.

CryptoEdit uses the strong AES-256 encryption algorithm to encrypt and decrypt data on the fly without any appreciable delay in opening and saving documents.

Features

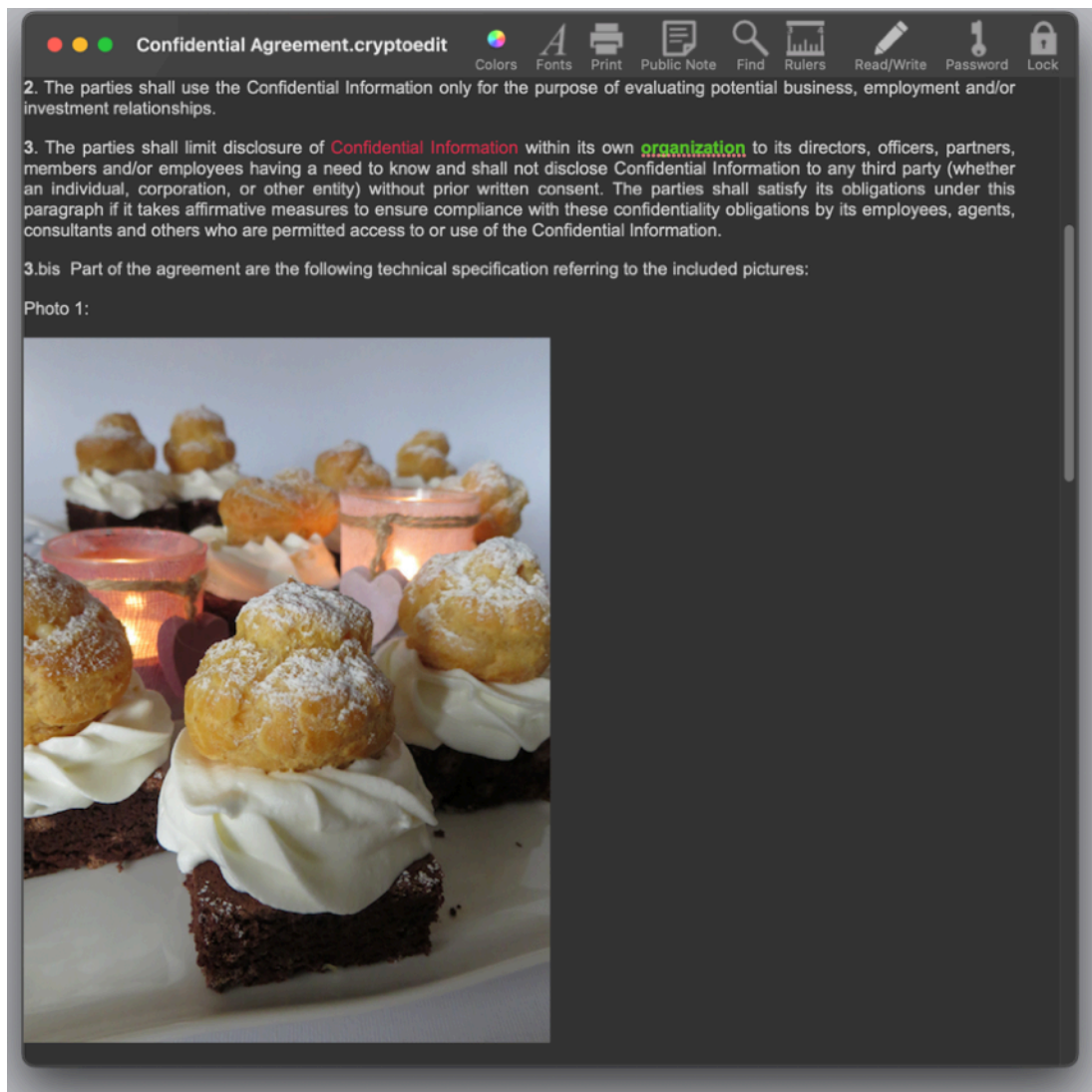
The features of CryptoEdit in editing document are:

Full text justification with use of rules with available different ruler format for any row.

Full use of fonts, styles, colors, and even of custom styles as in a full featured word processor and full use of the standard Font Dialog.

Full range of Find functions usable in the document.

Spelling service.



Inclusion of images in many format, tiff, jpg, gif ... and so on, using a simple Drag and Drop and with a resulting file, when saved on disk, totally encrypted included the embedded images in a single file. This is different of a standard RTFD file which saves the file as a bundle, with images embedded inside the bundle. This is what we think is the perfect solution, considering CryptoEdit is about safety of your data, and we assume that also the images inside your reserved documents are reserved too.

Open and save

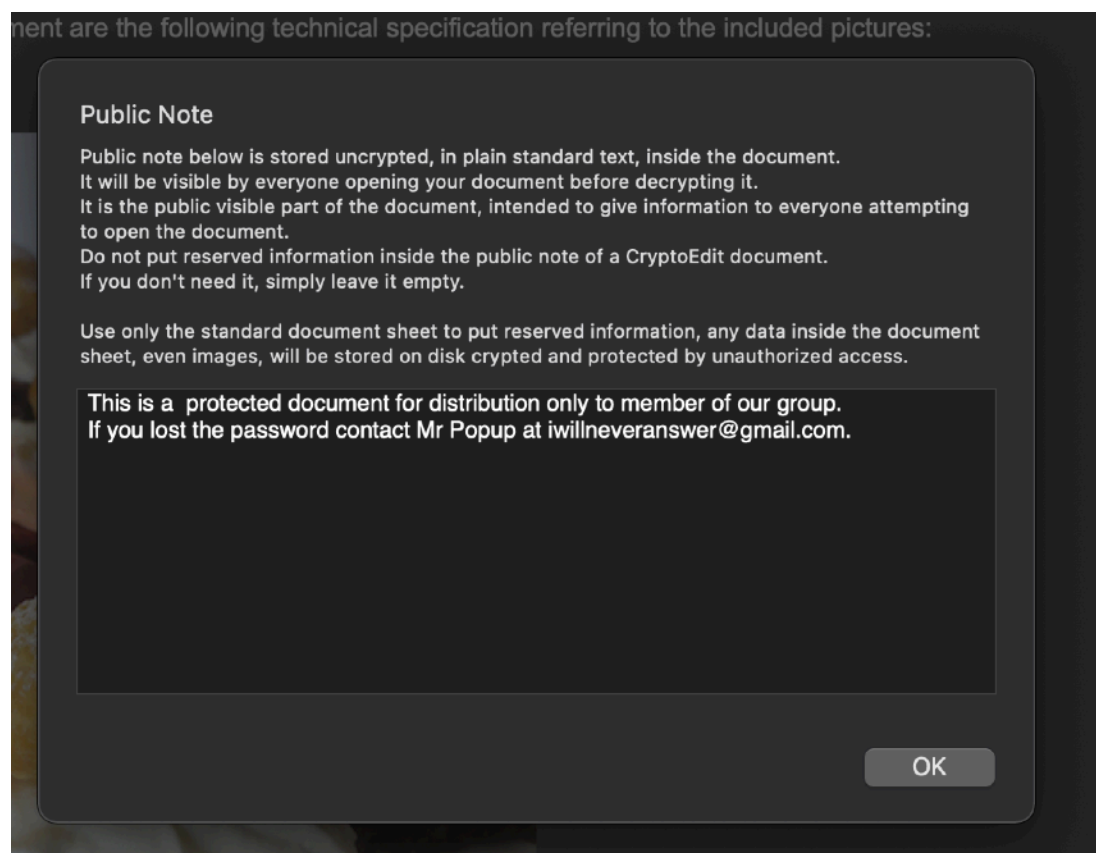
CryptoEdit is a document based standard Mac application.
You can manage as many documents you like in the usual Mac way.
Autosave is enabled by default.

Public Note

You can have a CryptoEdit document display a public note opening it, before inserting the password. This is intend as a way to have a text note available to everyone, also people without the password to open the document. The public note

is "public", everyone can read it just launching the document, so, do not insert reserved data in the public note!

The Public note can be inserted while editing the document.



The public note is not encrypted. Typically you can insert a text for you to read before inserting the password, or if you want to distribute your document, you can use the public note to explain how to obtain the password from you ... and so on. Use the public note inside the document for the purpose you need. Access this functionality from the menu or the standard toolbar.

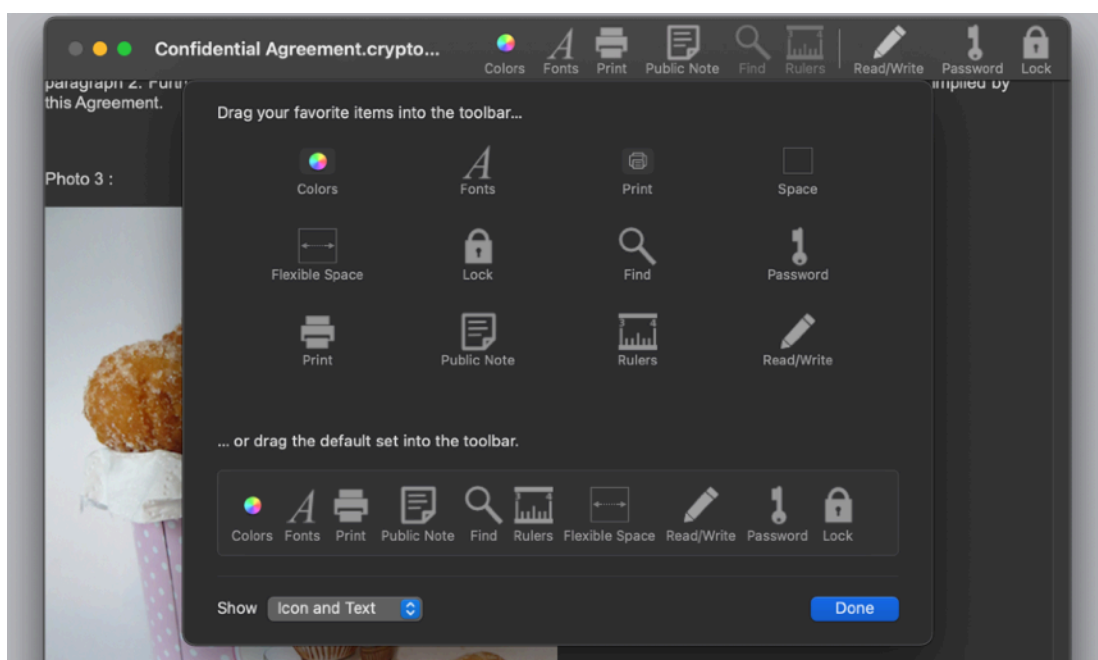
When the document will be re-opened, the user will see the public note while he is requested to enter the password to unlock the document.



Toolbar

You can use the toolbar at the top of the CryptoEdit Window to access frequented function.

With control-click (or right-click if you have a 2/3/n buttons mouse) you can also select "Customize Toolbar" and specify the icon buttons inside it in the usual standard way.



Read/Write

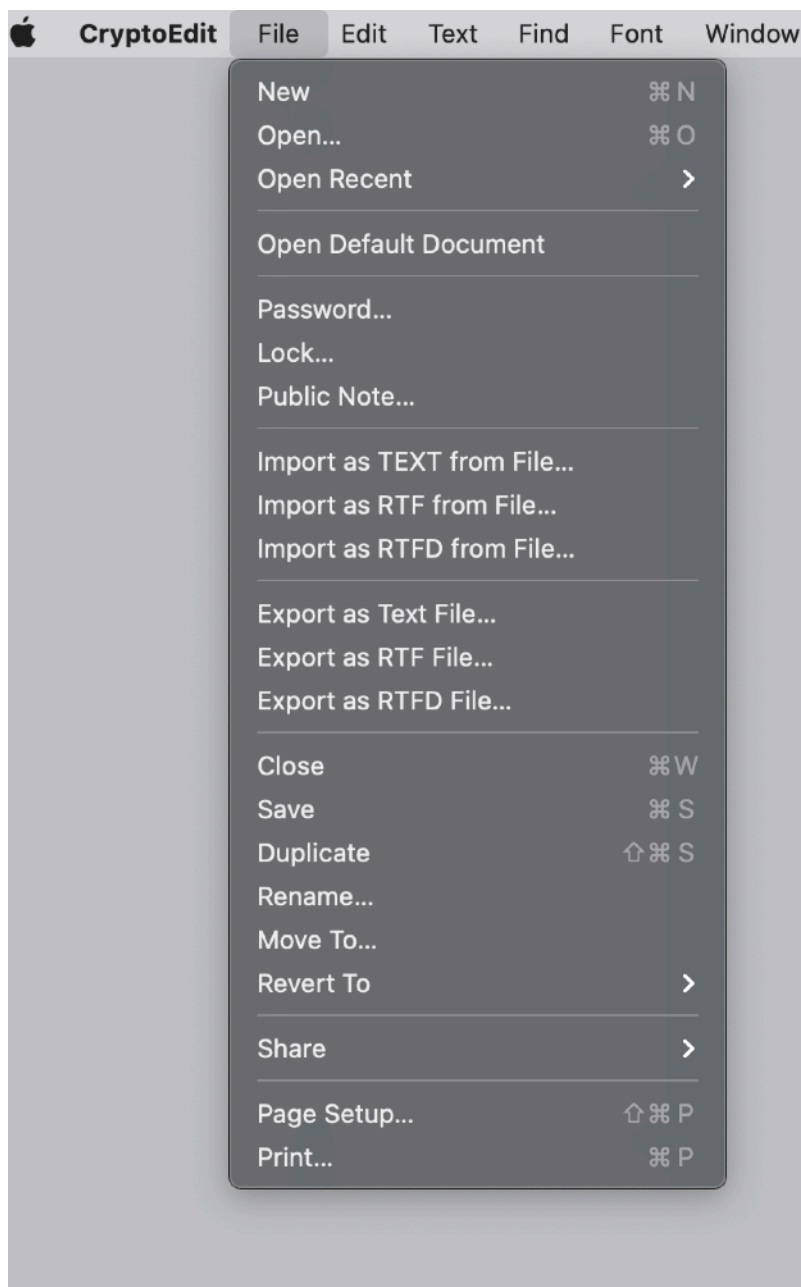
You can specify from the toolbar or the menu a file as read only, in that case you will not be able to edit it

With another click the status of the document can be changed back

A document saves its status over application relaunches

Import from File

To import data inside a CryptoEdit document, select the a import command from the “File” menu.



The content of the imported document will be placed at the insertion point. If you select text inside your document the imported content will replace the selected text. In same way it works as the paste command. Import can work importing Text or RTF files or RTFD files. The "Import as Text from File" works on text and also on RTF and RTFD files. Everything imported will be considered a text file. If you import a RTF file with with "Import as Text from File" you will insert the rtf code as if it was text. If you want to import a RTF file and have the RTF feature enabled as in a true RTF editor, you must use the "Import as RTF from File..." Using "Import as RTF from File..." allows only to select files ending in .rtf and insert the content directly with the RTF formatting applied. You can also import RTFD files. RTFD files are a special kind of RTF with images embedded. RTFD files are implemented as bundle with RTF and images of different format resulting in a single graphical page. You can import only from files ending in .rtfd When you import a RTFD file, CryptoEdit handle it natively and place the content as usually at the current prompt position. The result of the imported area is a formatted text and graphics as the one imported. The difference is only at saving time. When you save a CryptoEdit file, it is saved on disk in a single encrypted file, even if it contains images, and not in a bundle (RTF + images) as in a RTFD files. Well, we can say that you can work with CryptoEdit and you don't need to know that to use it. It is just to understand the difference on a RTFD standard file and a CryptoEdit file containing content imported from a RTFD file. In a plain RTFD file the images are separate from the text and placed inside the same bundle (which looks like a single doc on Mac), in CryptoEdit rtf text and images are all encrypted and stored in a single data file, all encrypted. When you import data or embed images also using drag and drop, data will be encrypted by CryptoEdit saving the document, but what is encrypted is the CryptoEdit document with the data that were copied from the source to the document. The original data still are on your Hard Disk in plain format and they can be read by everyone. If you delete the source, the imported data still are inside the CryptoEdit document, images included, because, we will repeat it, they were copied inside the document, images included. If you don't delete the source you have the data encrypted in the CryptoEdit document but the original source still are on your Hard Disk in plain format.

Export to File

To export the data inside a CryptoEdit document select one of the export command under the File menu.

CryptoEdit will present a standard file dialog: specify the file to export to, and CryptoEdit will export all the content of the document to the file in the format you selected.

The resulting exported file will be readable by any standard application able to read the exported format, text, rtf or rtf (rtf + images)

The CryptoEdit document is not affected in any way, you only just exported in a plain file a content of a secure document, so this can in some way make available to everyone accessing the exported file, a private content. You know the content of the file, you exported it, you know if this is what you really want ... at this point you should understand what you do with your data.

Changing the password

You can at any time change the password defined to protect the document.

Do it using the “Password” command from the “File” menu or from the toolbar. To change it you must provide the old password and insert and confirm the new one.

If you change the password and you have written down the password in a secure place (as an example on a paper or using CryptoEdit) , remember to update it, or when you will go to read it you will read the old one, and when you will try to open the document with the old password you have changed ... you understand, also smart people sometime do silly things.

Note that the password is case sensitive, so “myhome” and “Myhome” are different password



The image shows a dark-themed dialog box titled "Changing the password protecting this document". The text inside reads: "A password to protect this document is already set. To change it, you must provide the old password:". Below this is a label "Old In Use Password:" followed by a text input field. The next section says: "Insert below the New password to use: You can also use a passphrase with words separated by spaces. Minimum total length must be 6 characters long". This is followed by a label "New Password:" and another text input field. Below that is a label "Retype Again the New Password (exactly the same of above):" and a third text input field. At the bottom left, there is a button labeled "Show Password" with the text "Shift-Command-H (use only in safe enviroment)" next to it. At the bottom right, there are two buttons: "Cancel" and "OK".

Please check that the caps lock of your keyboard is not inserted when you digit the password (unless you really want it) because if you think you have inserted “myhome” and you inserted “MYHOME” as long as you will try to open the document with “myhome” you will get a wrong password alert that can drive you crazy. We reported this specific case because we noticed that is a common error by users. We also noticed at that point that people try to insert the same wrong password a zillion of time hoping the computer will accept it. We can insure you that if it is wrong, CryptoEdit won't accept it, even if you try a zillion of time.

Encryption

Encryption is a fundamental part of CryptoEdit.

With computers now part of our current life, everyone has reserved data on her/his Mac.

These data contains detail very very important about personal life or work.

A person simply can't afford that someone can read and maybe make public these data.

Your computer can be stolen, especially if it is a portable, and at that point it is just a matter of hours before all your data will be scanned.

You may also need technical assistance, because your computer need to be fixed by a technician, and you have to give it to a technical center, and you can be sure someone will have access to all the plain data on your hard Disk.

If you have used CryptoEdit and you have used a good password others can do nothing with your data, because they are encrypted with a strong algorithm (AES-256) and without the password your data are a useless series of bit, just crap. I can't say it is impossible to decrypt them, but the effort necessary to break AES-256 in the way CryptoEdit uses it, it is really too much for them.

CryptoEdit doesn't allow to save without password, if you saved it, you can be sure that you saved it encrypted. You won't find yourself asking " Did I save it encrypted?" It's a feature!

CryptoEdit asks you to use a password of a minimum of 6 character to force you to use a password with a minimum of security. This because 6 char is the minimum length for a good password. Longer (at least 9 chars or more) is better.

It would be possible also to let the software choose the password for you the first time, but you need a password you can remember, so you need to think yourself at the password to use.

Unfortunately very often this is a cause of big pain because people doing this don't realise they are disabling the scope of encryption, using a weak password. Please use a good one (one other can find easily)

Crypto Edit can decrypt previous document created with the old version (1.x) of CryptoEdit using the Blowfish algorithm, successive saving operations will convert the document to use the new AES-256 based format

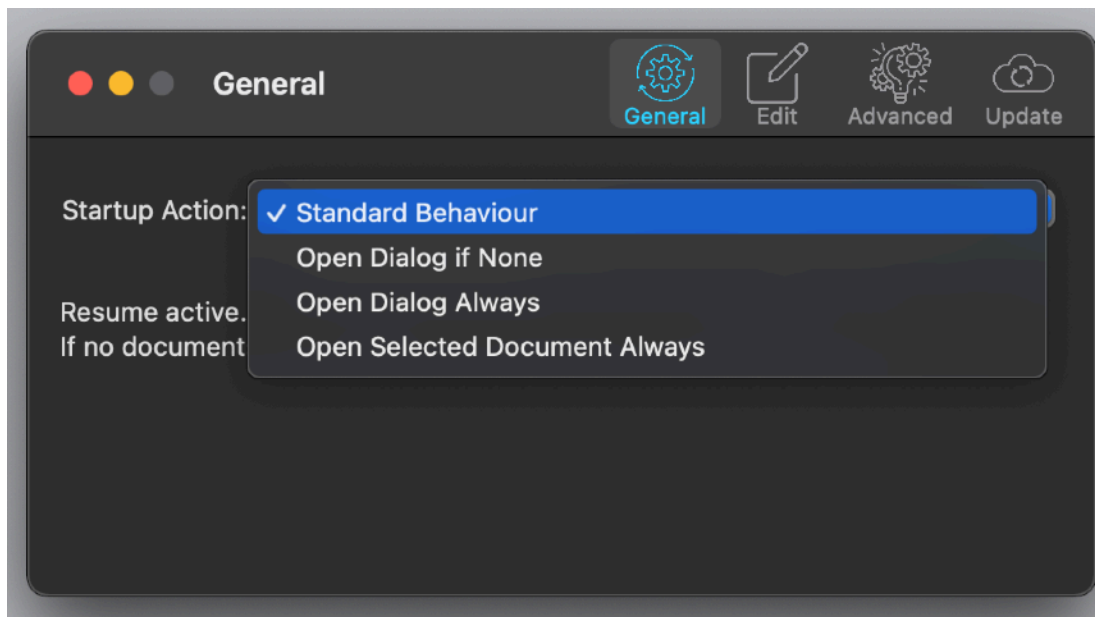
Dark Appearance Mode

This application is fully compatible with Dark Appearance Mode available on macOS from macOS 10.14 Mojave and obviously with Light Appearance Mode on any macOS release it can run on.

Preferences

General

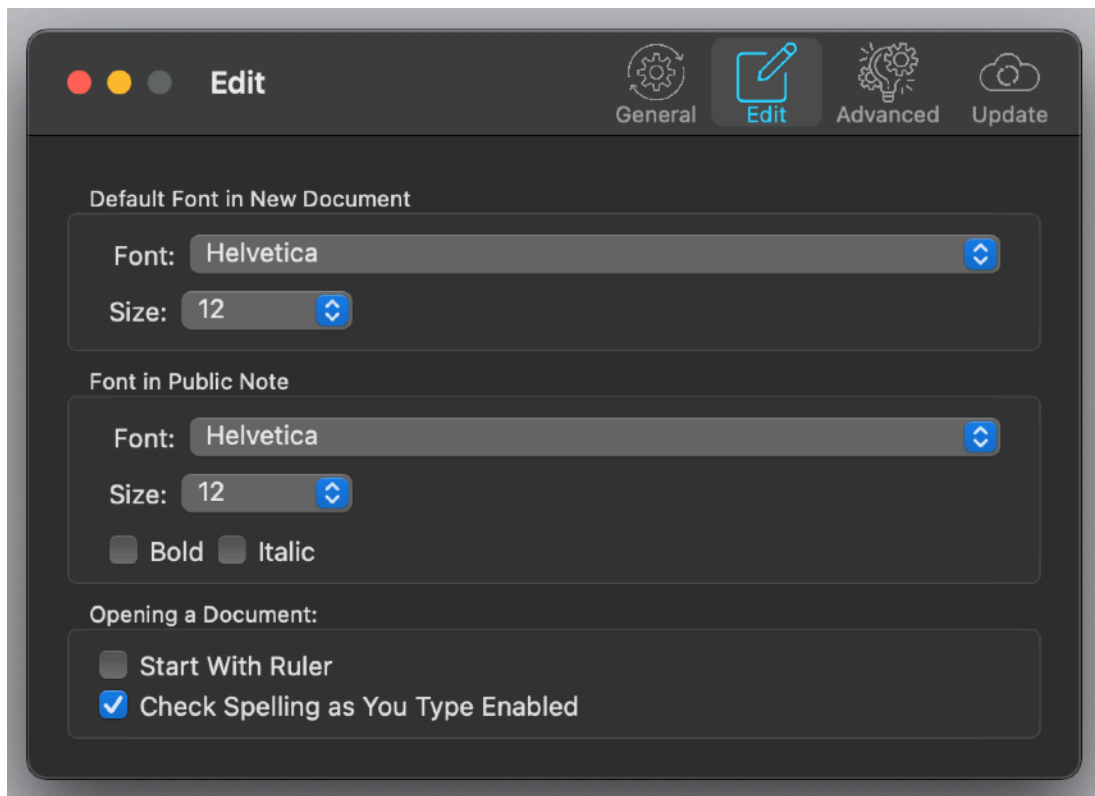
Specify the action to do at startup



Edit

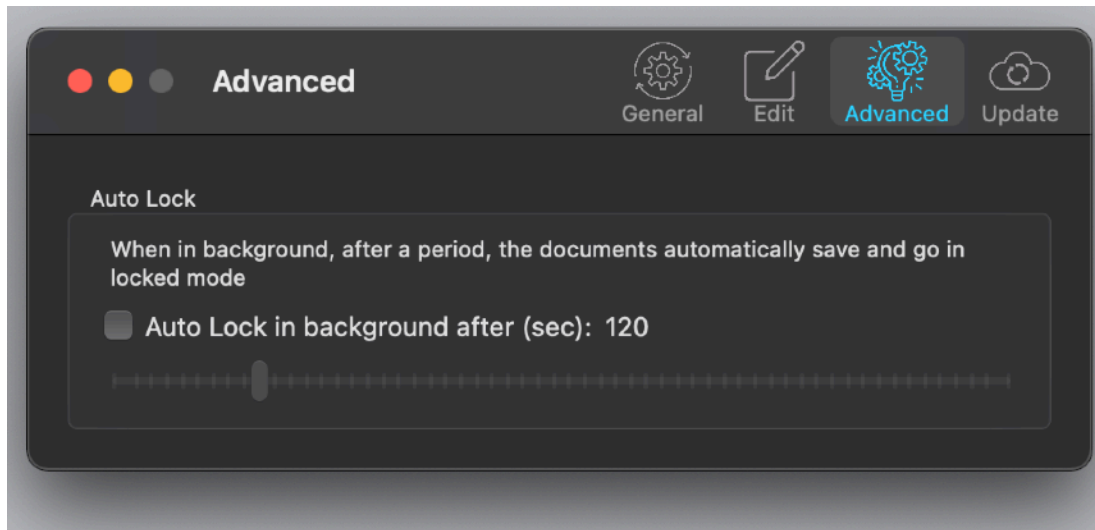
Settings used opening a new document:

- Ruler in the document visible
- Check Spelling as-you-type enabled
- Font used in a new opened document
- Font used to display the public note



Advanced

Advanced settings:



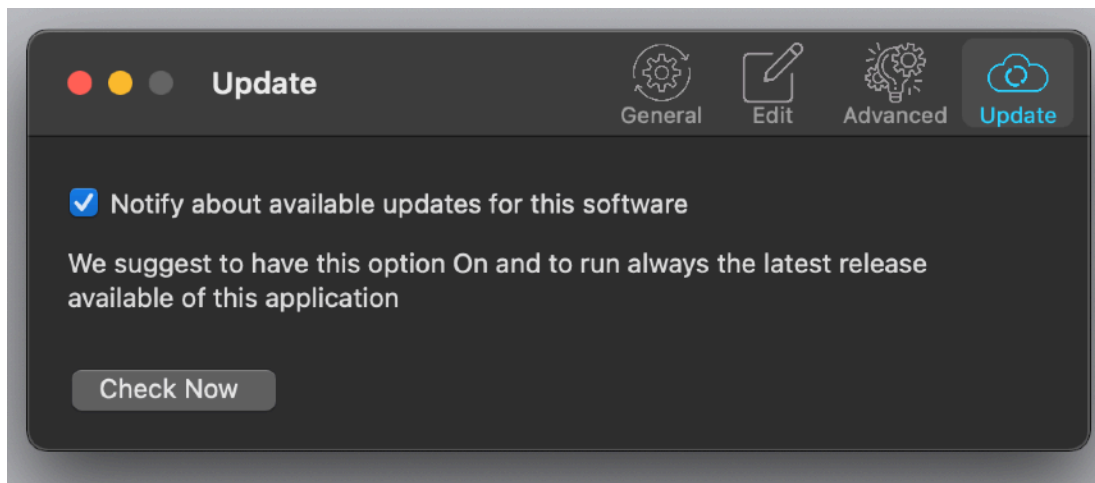
The Auto Lock time after which a document auto lock itself if the application was put in background (very useful to don't forgot Crypto Edit with reserved data opened if we switch to another application)
All the opened documents will be auto-locked.

Update

CryptoEdit can inform you if an update is available.
We suggest to leave this option on.

When you check if an update is available, the application ping the Tension Software server and receive an answer about the last release available, the application can in that way know if its obsolete or not.
In case the application will ask you if you like to download an upgrade.

The Update section is not available in the App Store Release (if you purchased via the App Store, to obtain an update use the App Store Update function)



If you download the upgrade from our site, also using the upgrade function internal to the app, you need to install it.

A common error is to download an upgrade and install it maintaining the old application somewhere on the hard disk. Then using to open the documents sometime the old application and sometime the new one. This cause some problems*. To avoid it simply install your application in the place dedicated to it, the Application folder. When you install an update on the standard Application folder, the system will ask if you want to replace the old one with the new, answering yes will install the new one replacing the old.

*If the application says the document you are trying to open was created with a newer version of the application, probably you have two different release of the application on your Hard Disk and you are trying to open a document with the older version after having modified the document with the new one. When you receive a similar message open the about box inside the application and see if you are running the last release. In case download it, install it and USE it!

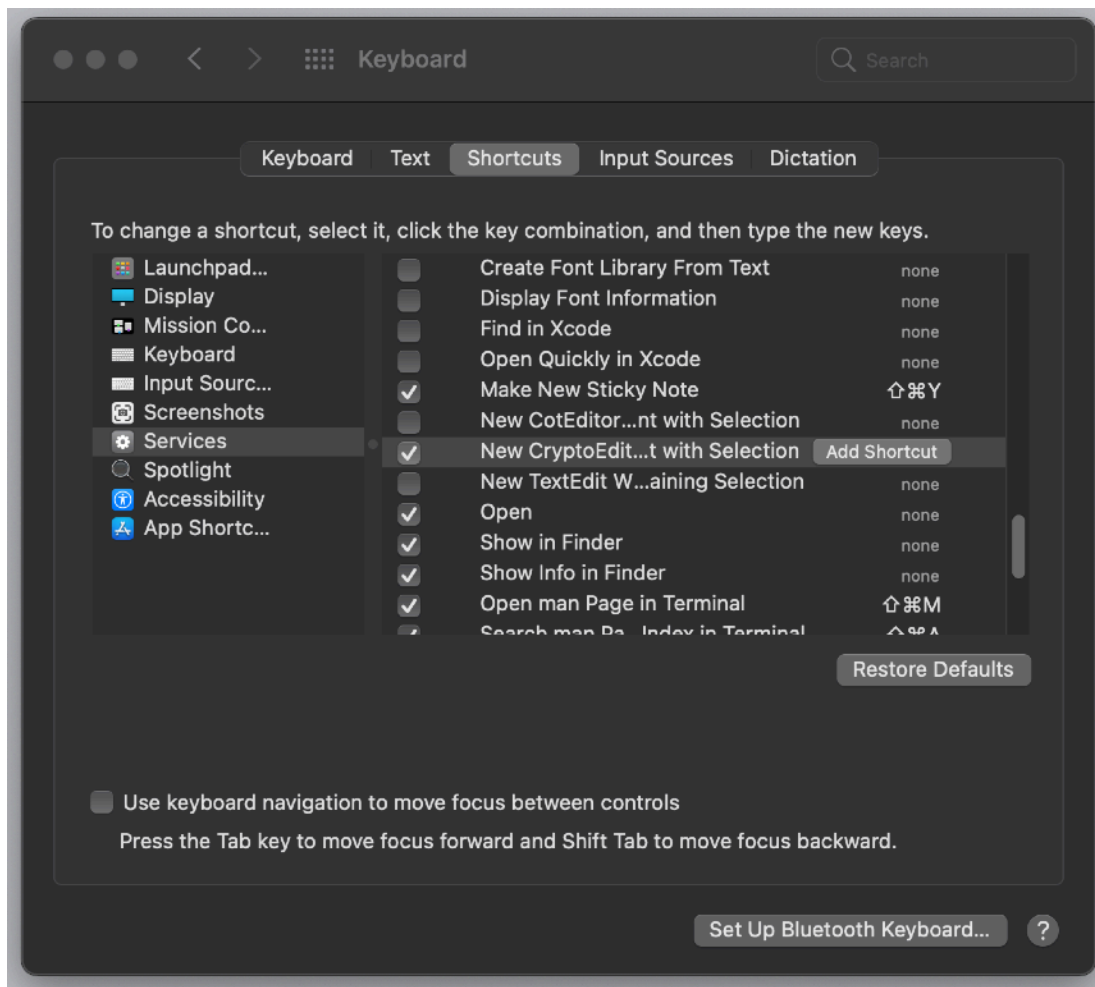
Only upgrade from the App Store are installed automatically.

Using CryptoEdit as a service from other applications

To use CryptoEdit as a service you need first to enable the service it offers in the central place Apple reserved to enable it.

Open your General preferences dialog and select Keyboard > Shortcuts

Search for 'New CryptoEdit Document with Selection' and select it



At that point from any application you can create in a single command a CryptoEdit document containing a text selection.

In any application supporting Text:
Select the text and use from the 'Application Menu'

Service > New CryptoEdit Document with Selection

CryptoEdit will launch creating a document containing the selected text
It will ask to insert a new password to protect the document.

Help

CryptoEdit provides a standard PDF User guide included with the application.
You can access it under the Help menu.

Support

You can also obtain support using the 'Support Email...' command. An email will be prepared using your email client with the correct address to send to.
Yes, we answer to your emails.

CryptoEdit is a Commercial Program

If you downloaded it from our site you can use our software for a test period of 10 days

After that you are required to buy a license to be legally authorized to continue to use our software

In case of the App Store release, a license is already included with your App Store purchase and you don't need to buy a license

Licensing CryptoEdit

You can buy a license to use our software using the 'Buy License' command under the Help menu.

You will open in your browser our license web page on our web site

In case of the App Store release, a license is already included with your App Store purchase and you don't need to buy a license